



KRIMINALOMSORGEN

CORRECTIONAL SERVICE OF NORWAY STAFF ACADEMY



Kriminalomsorgens utdanningscenter KRUS



KRIMINALOMSORGEN

CORRECTIONAL SERVICE OF NORWAY

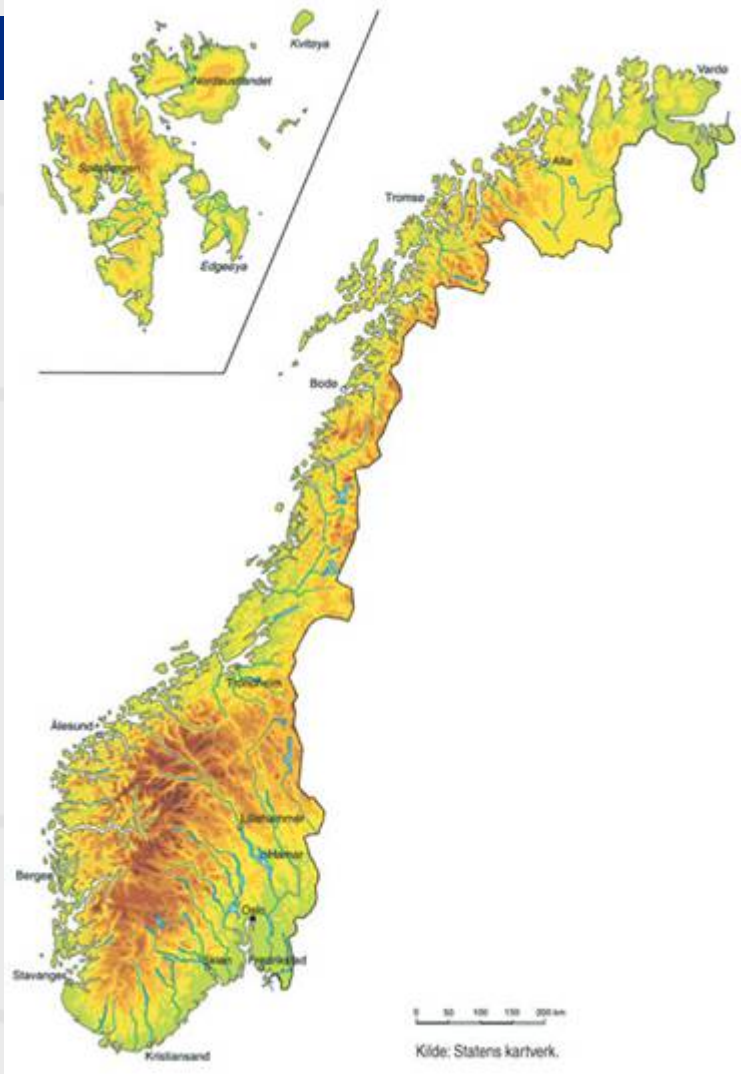
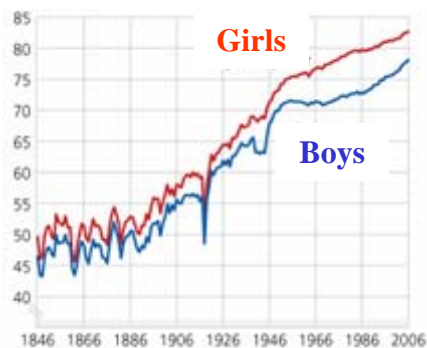
Facts about Norway

- Area: **385 155 km²**
- Population **4 799 300** (1.Jan .2009)
- Population per km²: **12.1**
- Capital city: **Oslo** (575 475 inhabitants)
- Language: **Norwegian**
(in some districts, also **Sámi**)
- State Church: **Church of Norway**
(Evangelical Lutheran)
- Currency: **Norwegian kroner**
(100 NOK = USD 14 = Euro 11)
- Constitution Day: **17 May**
- Population growth (2006): **0.7**
- **460 000 persons = 9,6 percent** of the population - are immigrants, from 200 different countries.
- Average life expectancy (2006):
Female: 83 years Male: 78 years

Population Development 1735 - 2007



Average Life Expectancy 1846 - 2006





KRIMINALOMSORGEN

CORRECTIONAL SERVICE OF NORWAY

Norway (prison statistics 2008)

- **4010** employees of the Correctional Service of Norway, 42 % women. 10% at KRUS
- **3670** staff in prisons
- Total capacity of cells: **3543** (95 % occupied, 9 % females)
- Total number of all new entrances to prison: **15 451**
- Number of entrances to remand custody: **ca 3295**
- **Ca 90 pr 100.000**
- Total number of prison sentences in 2008: **9 372**
- **2 812** community sentences
- **485** on alcohol programme





KRIMINALOMSORGEN

CORRECTIONAL SERVICE OF NORWAY

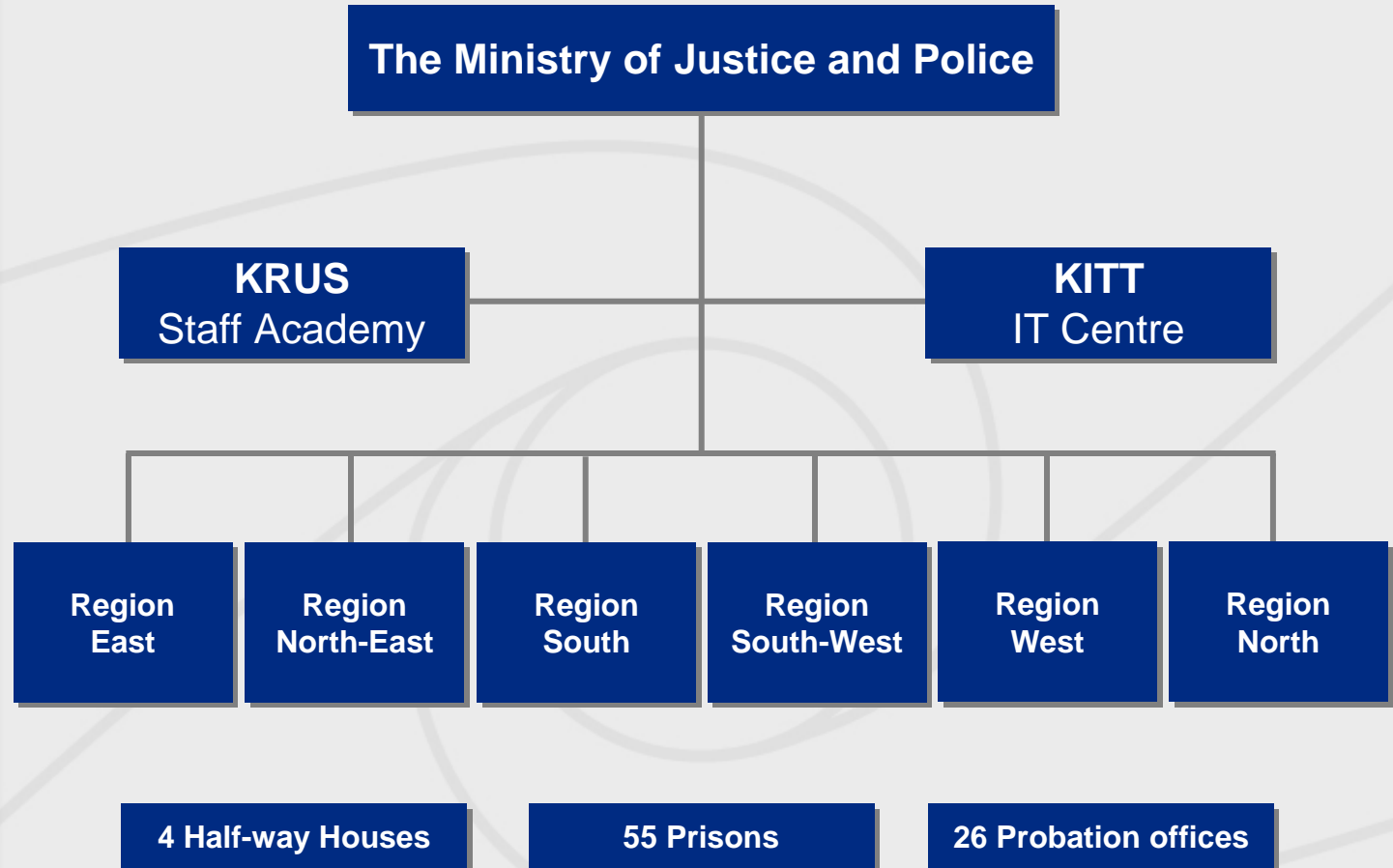
Correctional Service of Norway - Main tasks

- To carry out reactions set by the prosecution authority and by the courts of law, as soon as they are legally binding.
- To enable the offender, through his/her initiative, to change their own criminal behaviour.



KRIMINALOMSORGEN

CORRECTIONAL SERVICE OF NORWAY





KRIMINALOMSORGEN

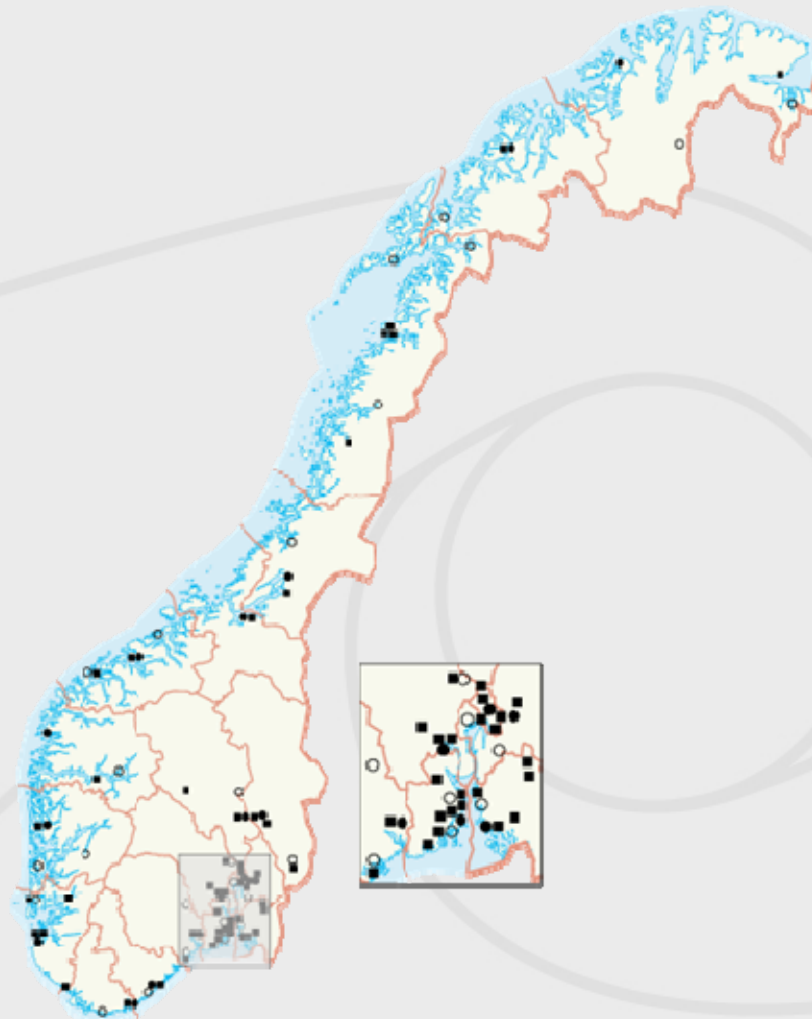
CORRECTIONAL SERVICE OF NORWAY





KRIMINALOMSORGEN

CORRECTIONAL SERVICE OF NORWAY



■	Prison
●○	Probation Offices



KRIMINALOMSORGEN

CORRECTIONAL SERVICE OF NORWAY STAFF ACADEMY





KRIMINALOMSORGEN

CORRECTIONAL SERVICE OF NORWAY STAFF ACADEMY

KRUS

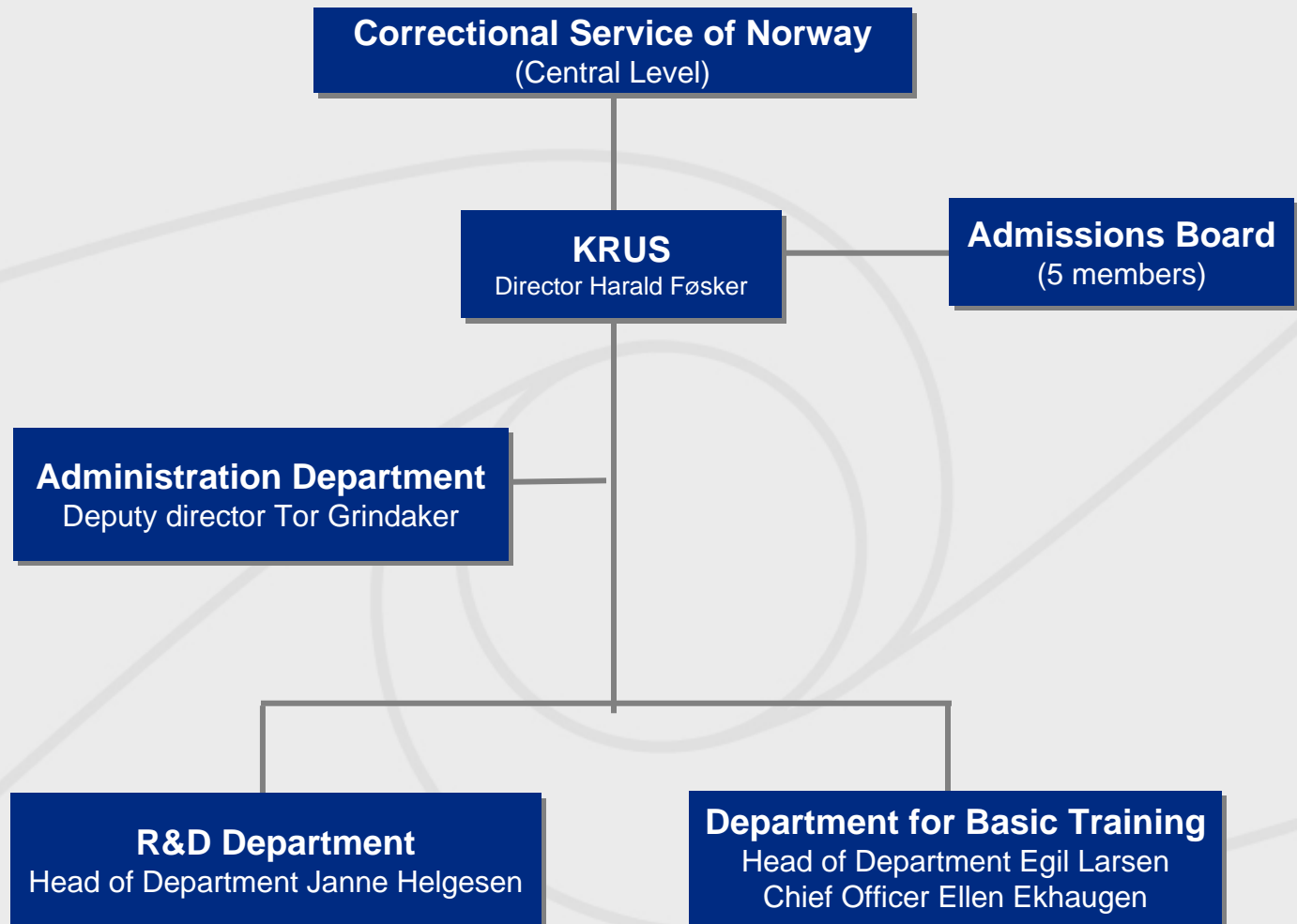
Staff Academy - Main tasks

- To provide special training for prison and works officers.
- To carry out research and provide information on the services and offer further education and in-service training for the 3670 employees at all levels.



KRIMINALOMSORGEN

CORRECTIONAL SERVICE OF NORWAY STAFF ACADEMY





KRIMINALOMSORGEN

CORRECTIONAL SERVICE OF NORWAY STAFF ACADEMY

The Department of Administration, Finances and ICT

The Department is responsible for:

- Budget & Finances
- Human resources
- Office services
- Computer network
- www.krus.no
- Hotel for course participants
- Student administration



KRIMINALOMSORGEN

CORRECTIONAL SERVICE OF NORWAY STAFF ACADEMY

The Department of Basic Training

The Prison College:

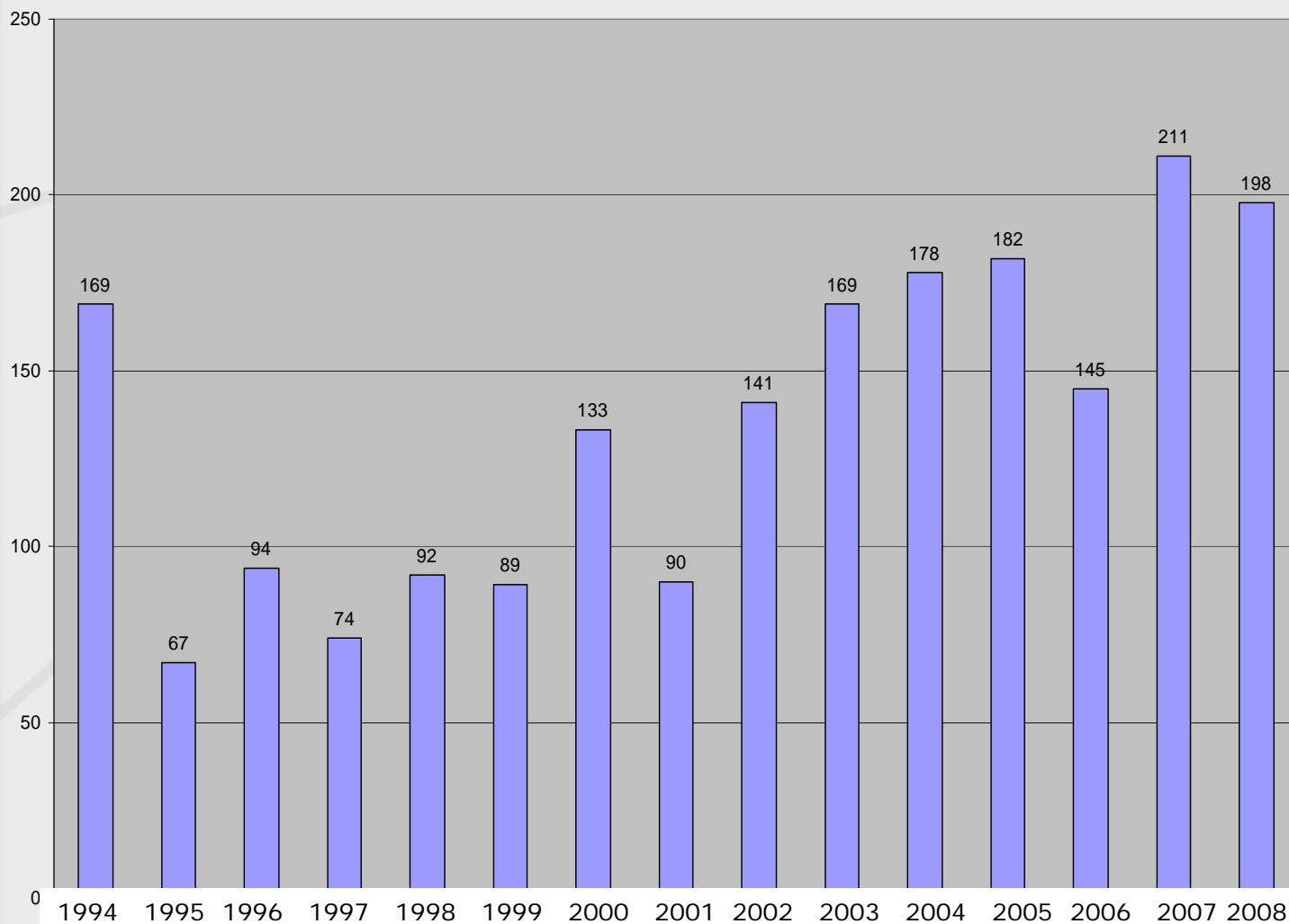
- A two-year basic education & training programme for all prison officer candidates in Norway.
- The Works Officer Training Programme which offers six months of specialized training for works officers.



KRIMINALOMSORGEN

CORRECTIONAL SERVICE OF NORWAY STAFF ACADEMY

Number of candidates 1994 - 2008

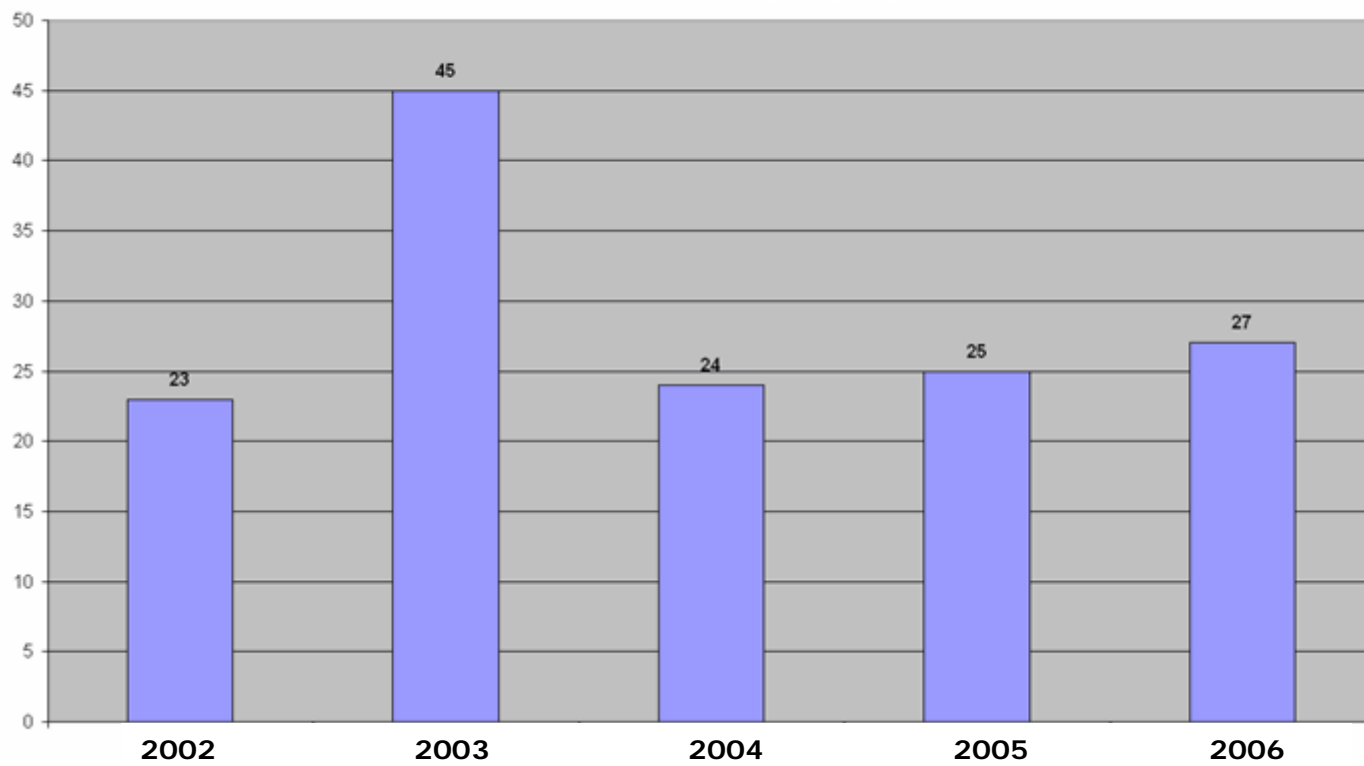




KRIMINALOMSORGEN

CORRECTIONAL SERVICE OF NORWAY STAFF ACADEMY

Foremen of works 2002 - 2006



Foremen of works

Year	2002	2003	2004	2005	2006
Number of foremen	23	45	24	25	27

Kriminalomsorgens utdanningscenter KRUS



KRIMINALOMSORGEN

CORRECTIONAL SERVICE OF NORWAY STAFF ACADEMY

The Department of Basic Training

Qualifications:

- Have entrance qualifications for higher education, or other relevant training and/or work experience.
- Have the necessary maturity and personal aptitude for employment in the Correctional Service.
- Have completed his or her military service/civil service or are exempted
- At least one year of practical work experience.
- Be 21 years of age or older.
- Pass a physical test.
- Have a spotless police record.
- Have a driver's licence.



KRIMINALOMSORGEN

CORRECTIONAL SERVICE OF NORWAY STAFF ACADEMY

The Department of Basic Training

1st Year	Pre-course 4 weeks at The Prison Officer College	Practical work with close supervision and guidance experience of 42 weeks. Two study days weekly	Exam theme 1
2nd Year	Theoretical studies 44 weeks	Works as prison officers 6 weeks	Exam theme 2, 3, 4, 5, 6. Project work
3rd Year	Obligatory Work Placement		



KRIMINALOMSORGEN

CORRECTIONAL SERVICE OF NORWAY STAFF ACADEMY

The Department of Basic Training

Theme 1	Case Criminal Proceedings and related law subjects
Theme 2	Ethics and professionalism in prison work
Theme 3	Practical prison work and safety
Theme 4	Criminology and criminal politics
Theme 5	Milieu Therapy work in institutions
Theme 6	The role of the Prison Officer



KRIMINALOMSORGEN

CORRECTIONAL SERVICE OF NORWAY STAFF ACADEMY

The Research and Development Department

Main tasks and functions of the Department are:

1. Further- and after-education, courses
2. Running and development of programmes
3. Research and evaluation projects
4. Offering other professional relevant training



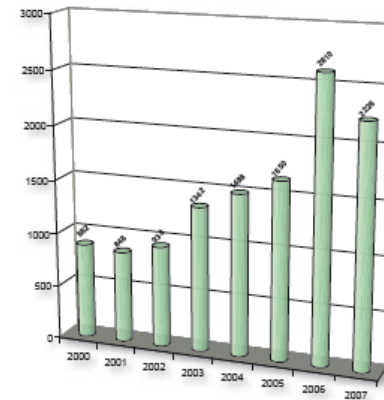
KRIMINALOMSORGEN

CORRECTIONAL SERVICE OF NORWAY STAFF ACADEMY

Statistics of the KRUS Hotel

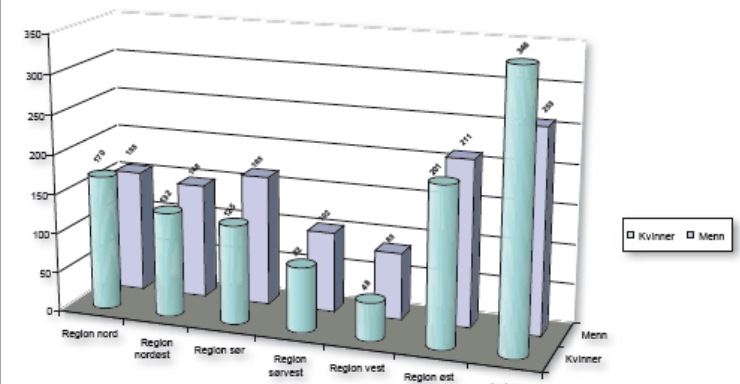
2000: 1909 Guests
2001: 1476 Guests
2002: 1700 Guests
2003: 1890 Guests
2004: 1659 Guests
2005: 1869 Guests
2006: 1667 Guests
2007: 1563 Guests
2008: 1808 Guests

Course participants 2000-2007



Kursdeltakere 2000 - 2007

Course attendants per region



Kursdeltakere på KRUS fordelt regionsvis 2007



KRIMINALOMSORGEN

CORRECTIONAL SERVICE OF NORWAY STAFF ACADEMY

The Research and Development Department

Publications:

Research results are disseminated through KRUS's own series of publications and external periodicals and publications or through lectures, courses and seminars.

Most publications are available at our website www.krus.no, some of them with abstracts in English.



KRIMINALOMSORGEN

KRUS Publications 2007 & 2008

2008

- Violence & Threats between Convicts
Kristin Hanoa
Oslo: KRUS report 1/2008
- Violence & Threats Against Staff at the Probation Service
Tore Rokkan
Oslo: KRUS report 2/2008
- Violence & Threats Towards Staff 2006
Yngve Hammerlin & Tore Rokkan
Oslo: KRUS report 3/2008

2007

- Norsk - engelsk / English - Norwegian
Dictionary for the Correctional Service
Knut Lage Bøe
Oslo: KRUS Handbook 2/2007
- The Drug Court Project
Berit Johnsen og Monika Svendsen:
Oslo: KRUS Documentation & debate 2/2007
- The Transition from Prison to Freedom
Siv Hjellnes & Torunn Højdahl:
Oslo: KRUS Dokumentasjon og debatt 1/2007.
- Correctional Statistics of Denmark, Finland, Iceland,
Norway and Sweden 2001-2005
Ragnar Kristoffersen (ed.)
Oslo: KRUS report 2/2007



KRIMINALOMSORGEN

CORRECTIONAL SERVICE OF NORWAY STAFF ACADEMY





Administrative Cooperation

- Four Ministries contribute to Education, Work opportunities , Housing , Library Service and Health Services for prisoners
- The Resettlement Guarantee:
 - Establishing obligatory structures of cooperation between Local and Central authorities and the Correctional Service at the date of release to reduce the problem of reoffenders
 - All prisoners are guaranteed an offer at the date of release to find solutions to problems considering housing, work, education and health



Administrative Cooperation

- Challenges:
 - Health Problems
 - Drug Addiction
 - Housing
 - Education
 - 7 percent have not completed primary school
 - 38 percent have only primary school
- The Norwegian Labour and Welfare Organisation (NAV)
 - Established July 2006
 - Signed an agreement of administrative cooperation with the Correctional Service in September 2006